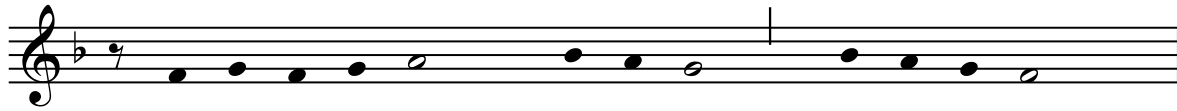


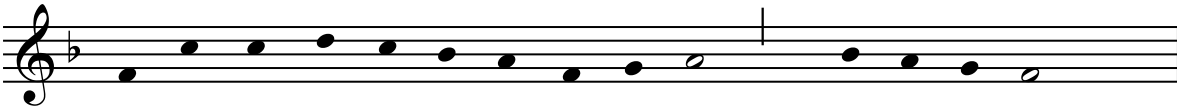
# REGINA CAELI

Latin, 14th Cent.

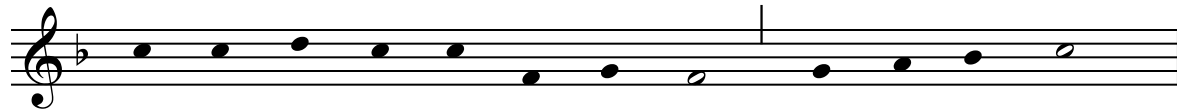
Chant, Mode VI



Re - gi - na cae - li,      lae - tá - re,      al - le - lú - ia,



Qui - a quem me - ru - í - sti por - tá - re,      al - le - lú - ia.



Re - sur - ré - xit si - cut di - xit,      al - le - lú - ia;



O - ra pro no - bis De - um,      al - le - lú - ia.